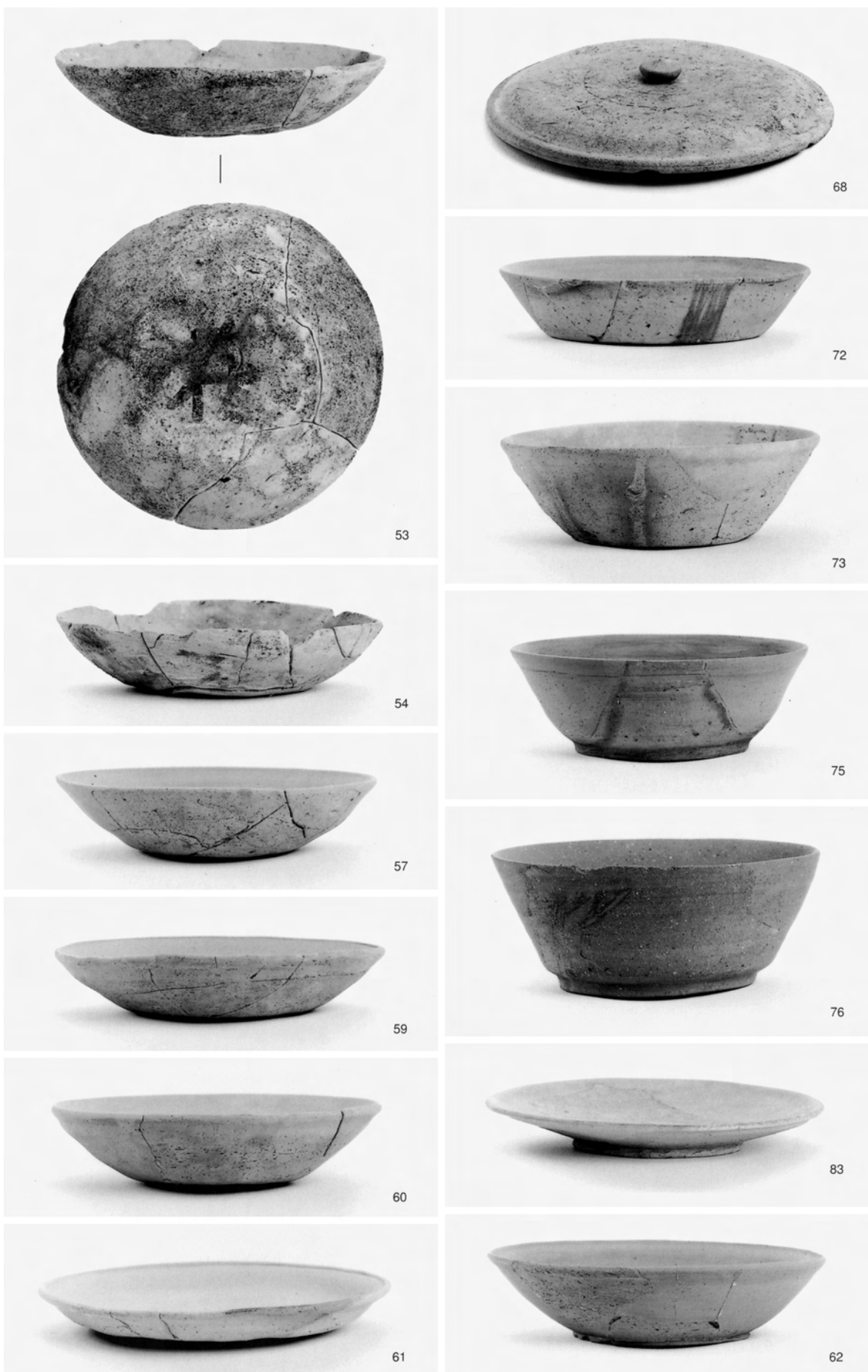




2区土壙 1730 出土土器



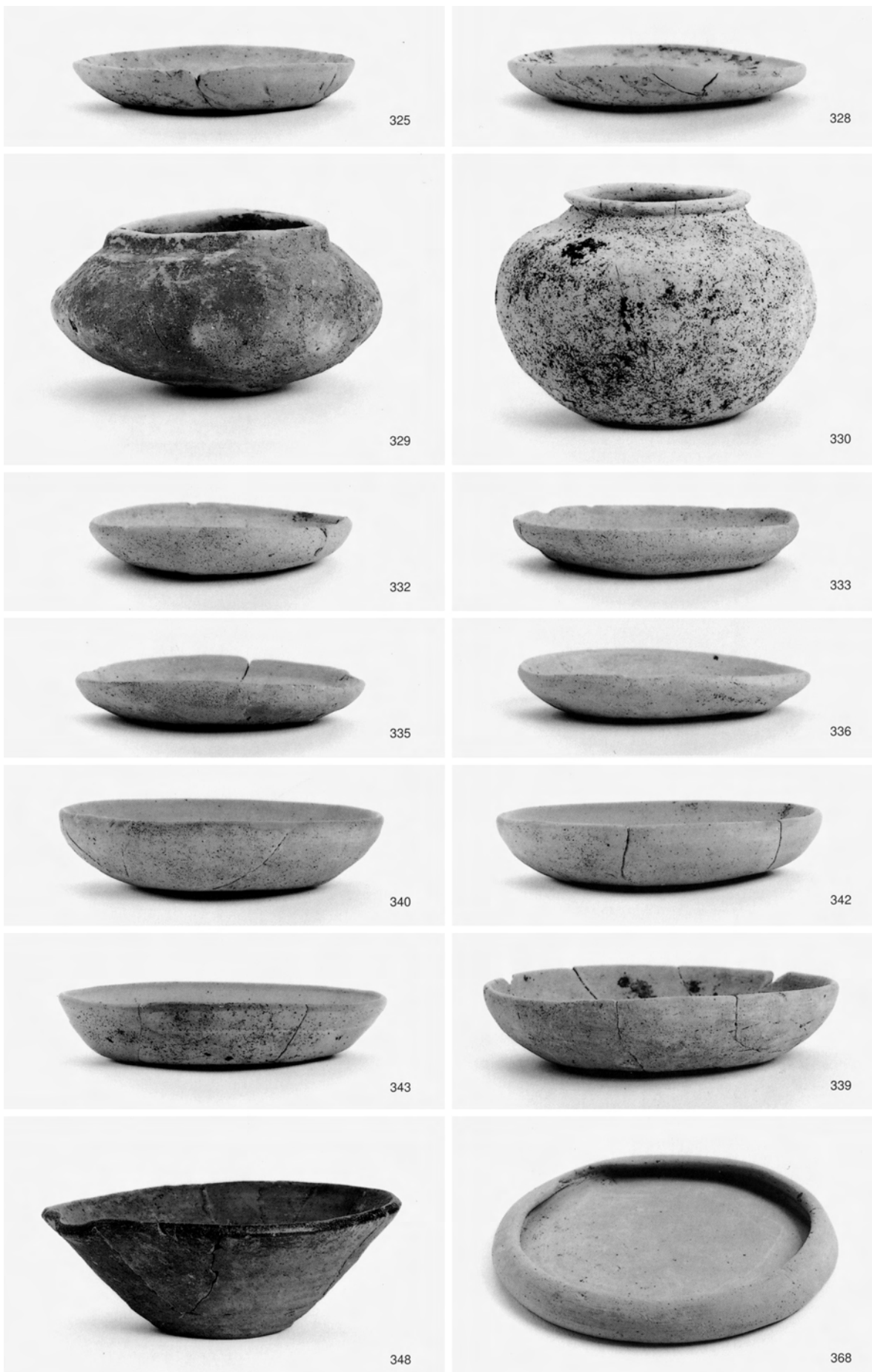
1区井戸1421出土土器



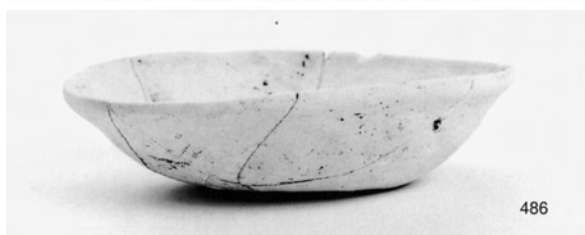
2 区土壙 1553 出土土器

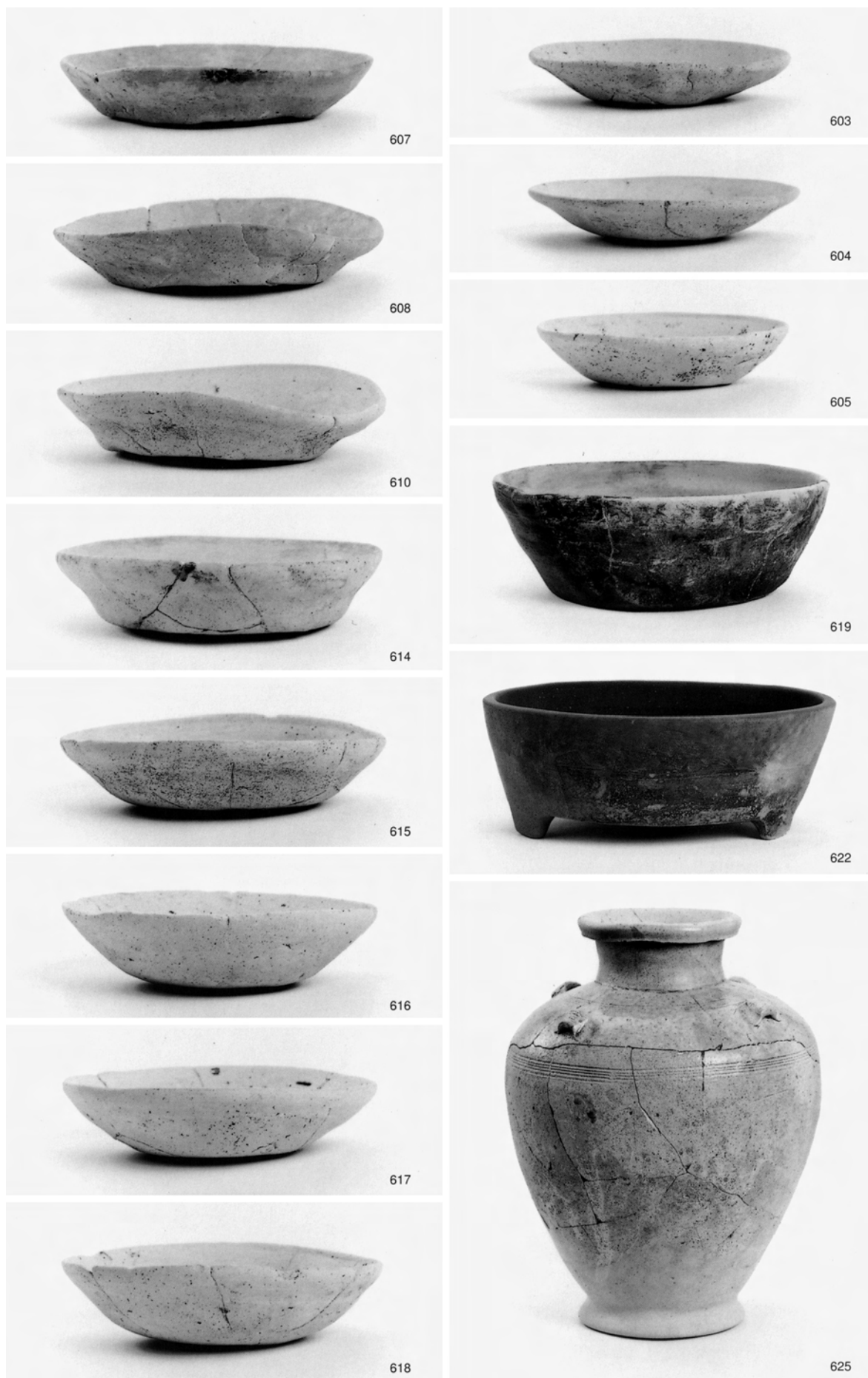


2区土壙 1849・2区土壙 1039 出土土器

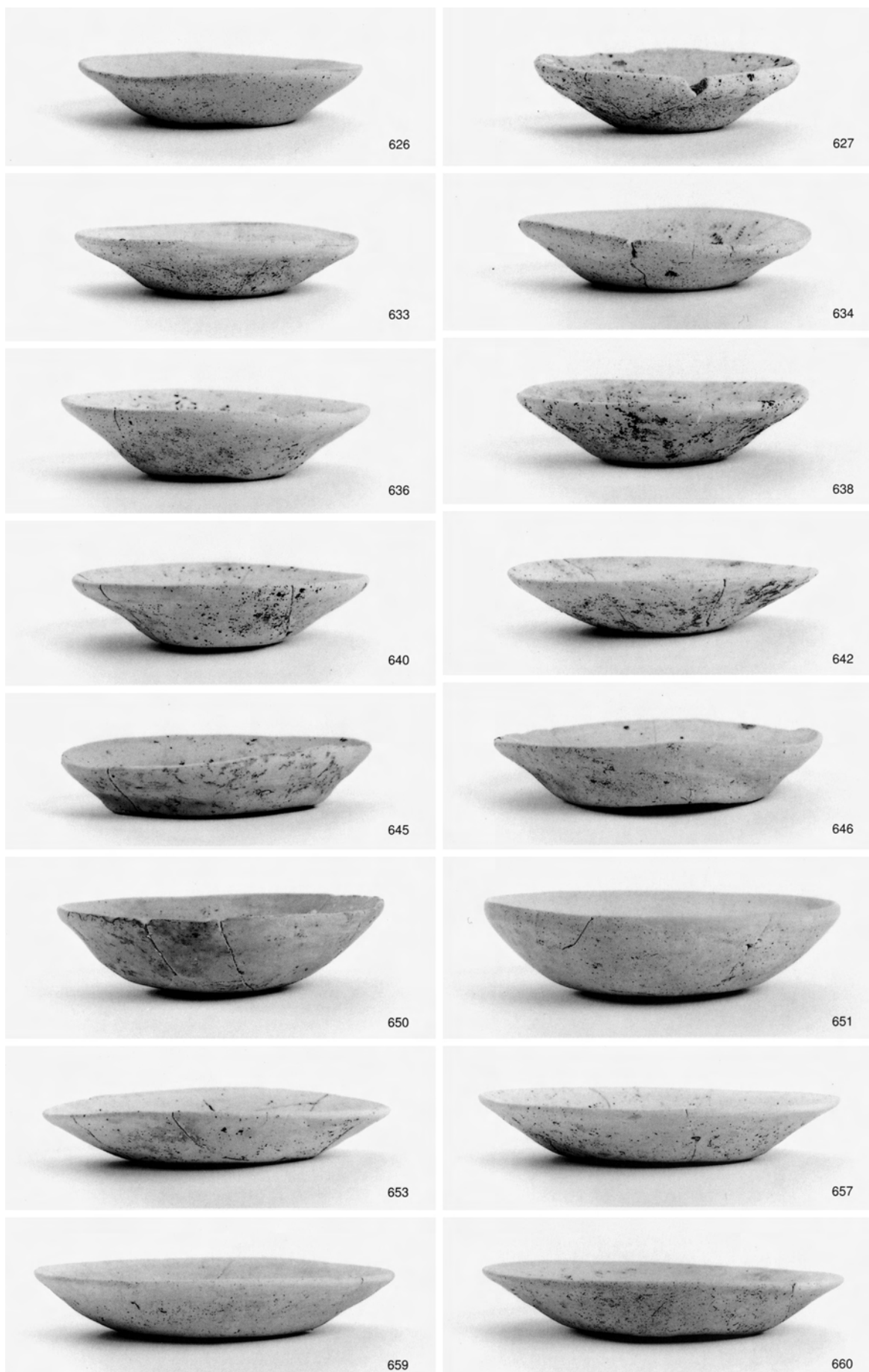


1区土壙 1361・2区土壙 1354・2区土壙 1362・1区土壙 550・2区土壙 1994 出土土器

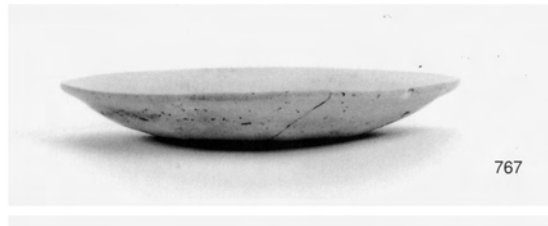
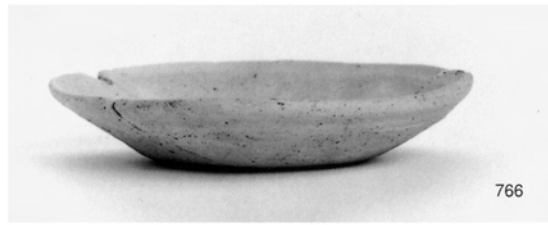
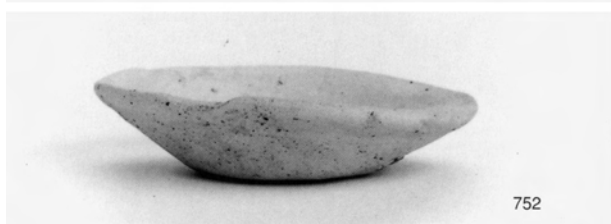


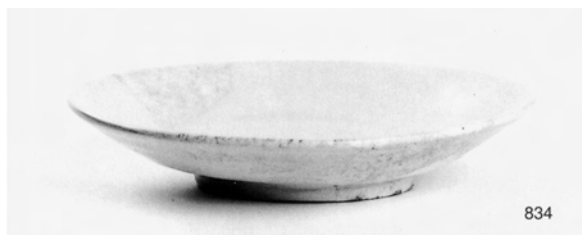


2 区土壙 1870 出土土器



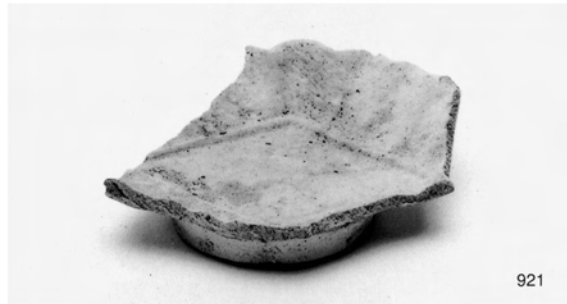
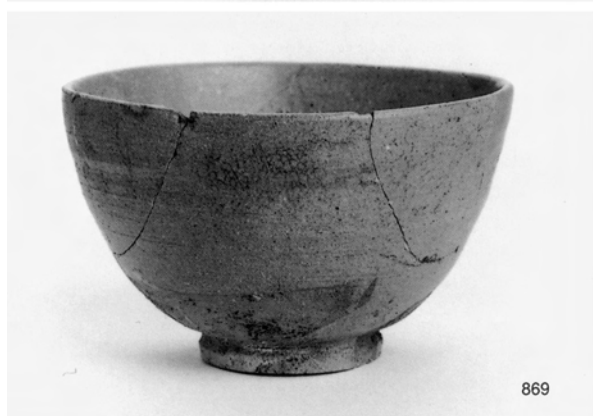
2 区土壙 1176 出土土器



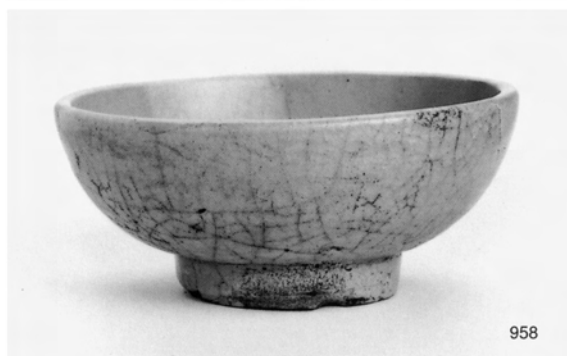


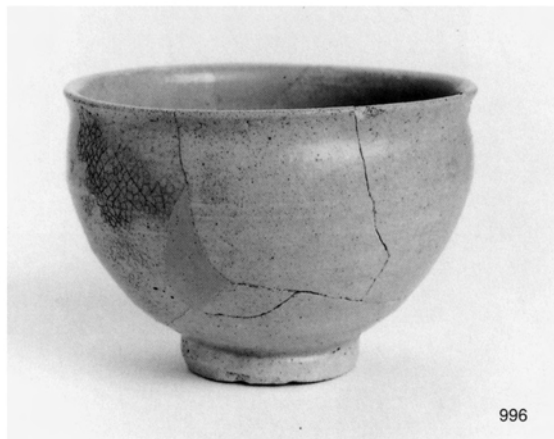
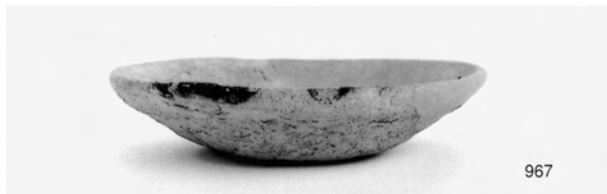
1 区土壙 353 出土土器





1 区土壙 768 出土土器 2 · 2 区土壙 776 出土土器 1

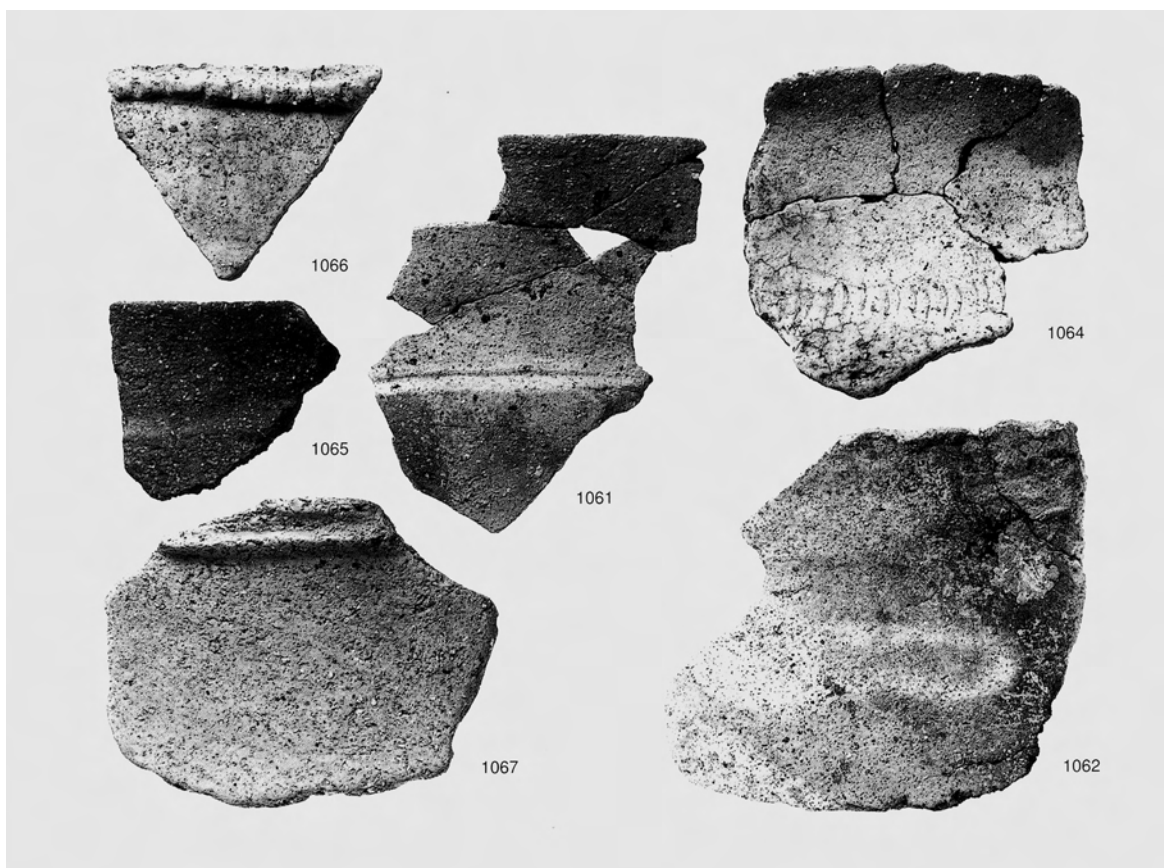




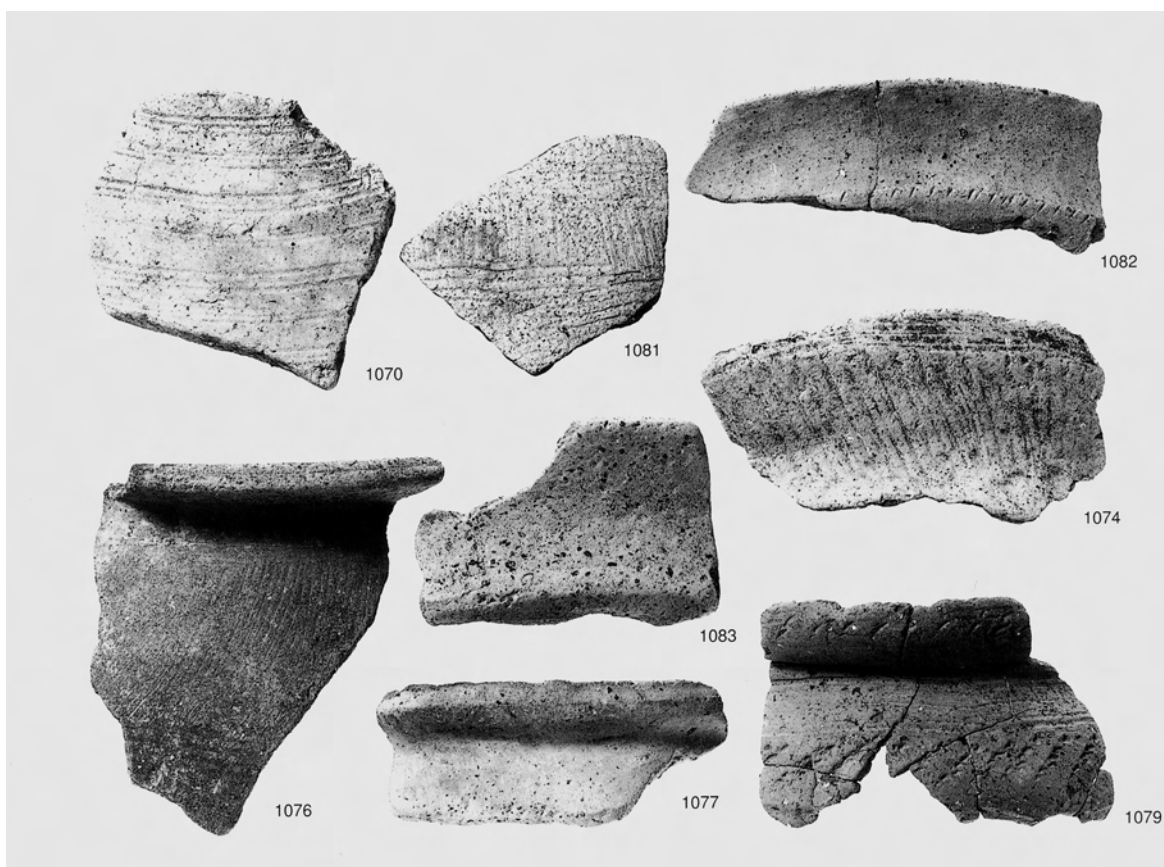
2 区土壙 813 出土土器 1



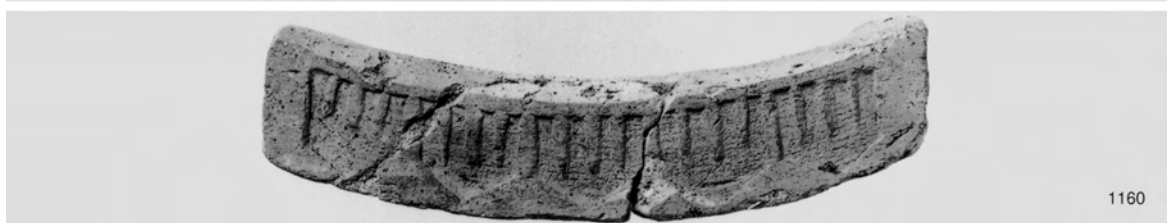
2区土壙 813 出土土器 2・1区土壙 190 出土土器



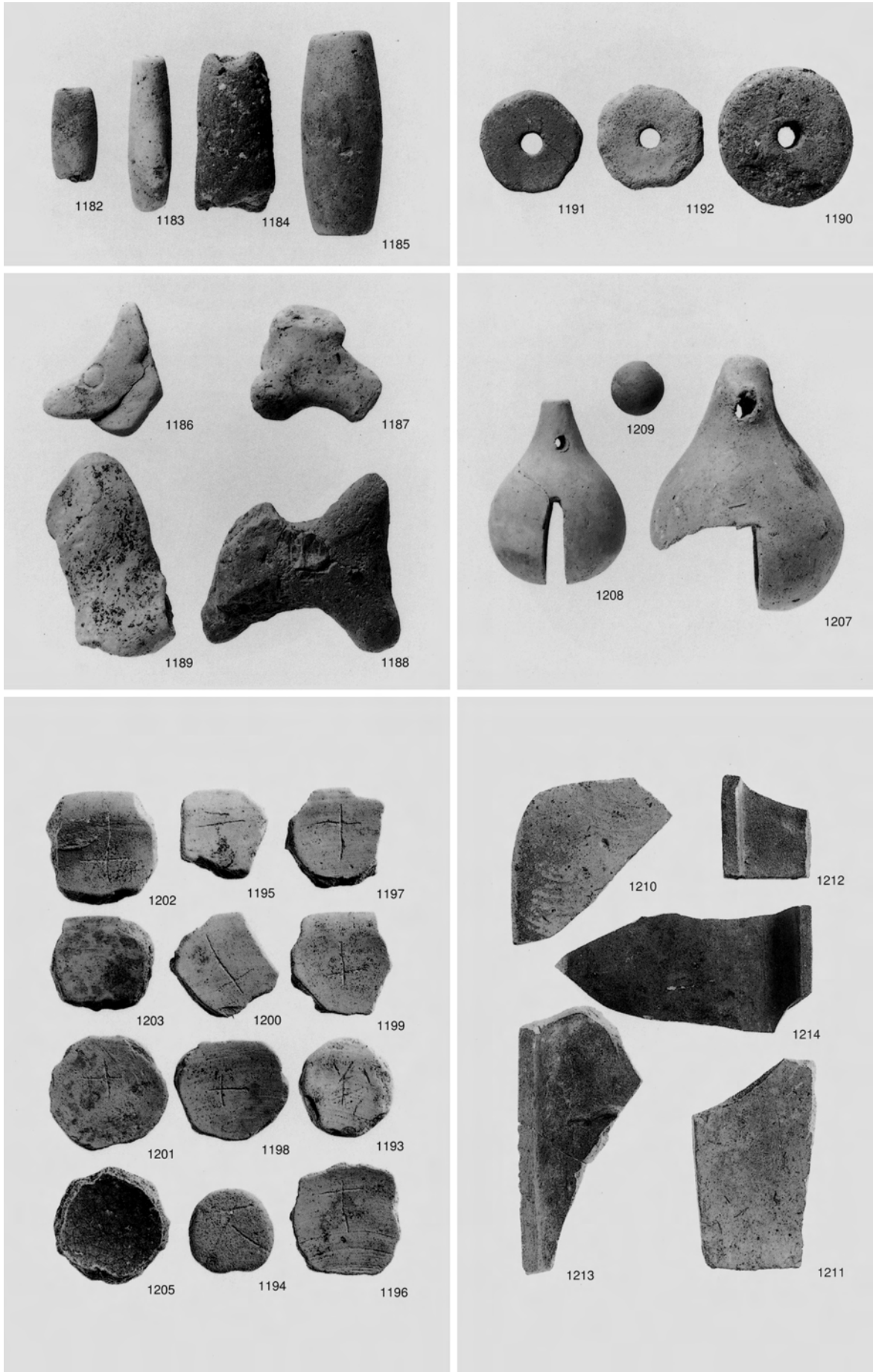
1 縄紋土器



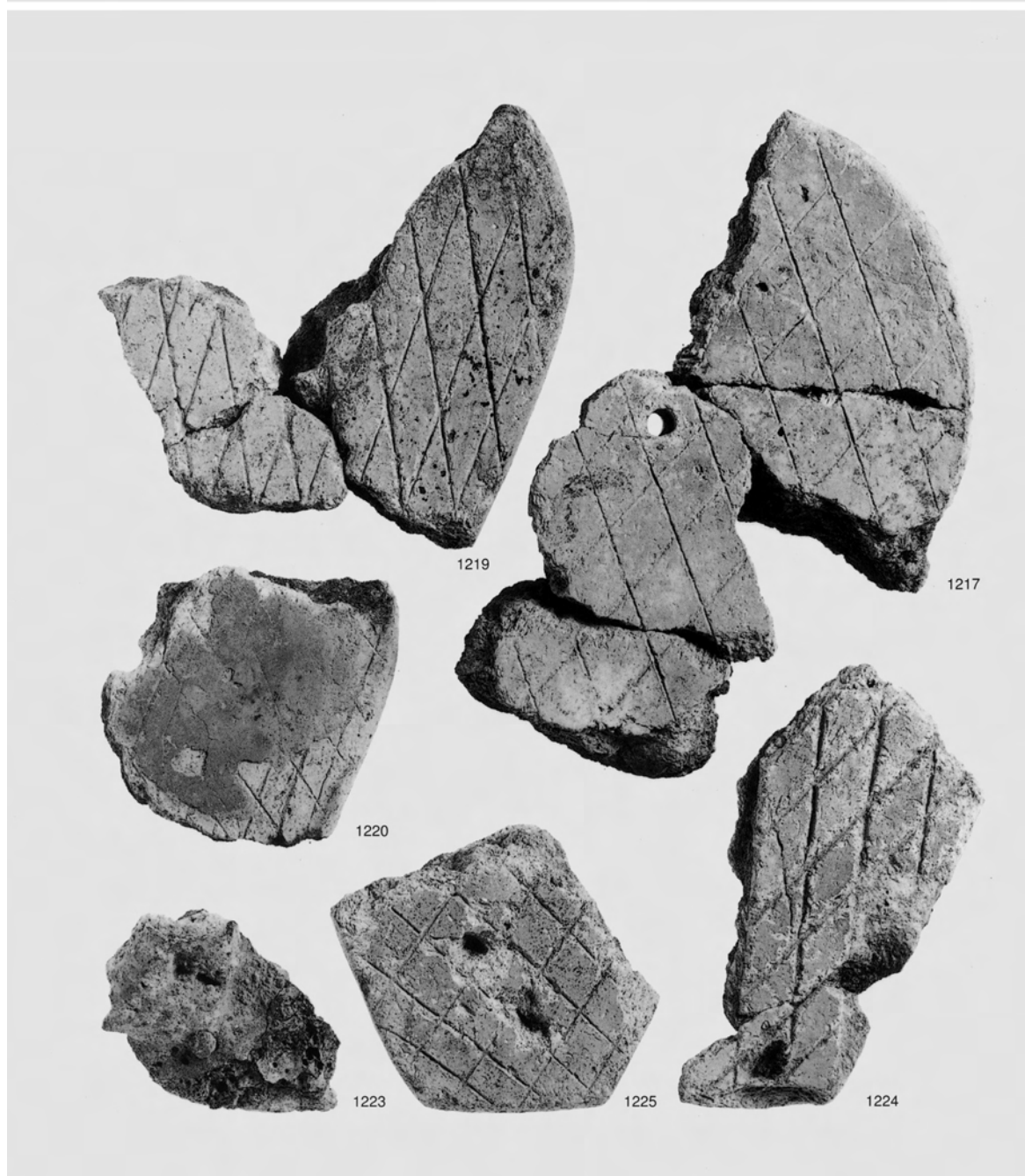
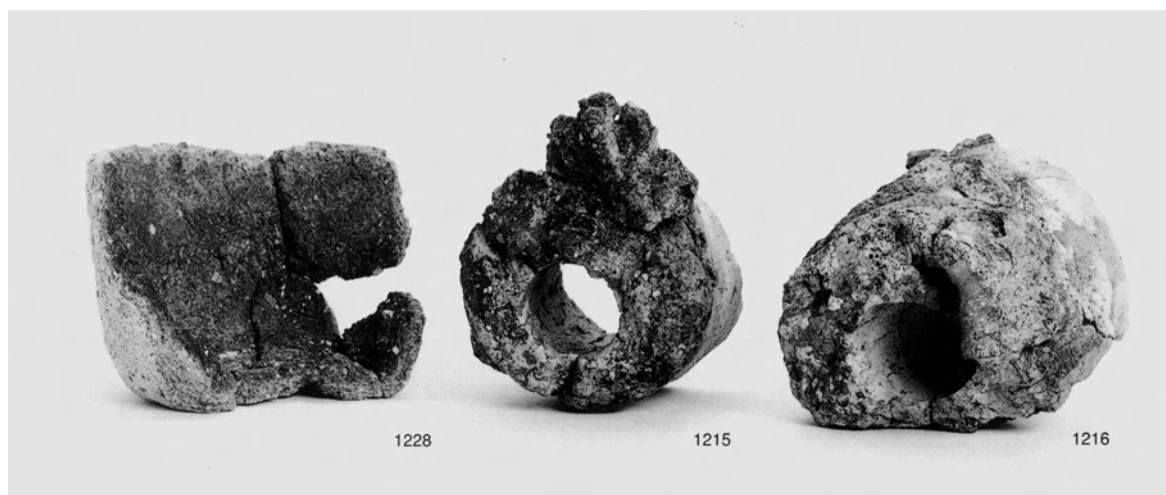
2 弥生土器・土師器







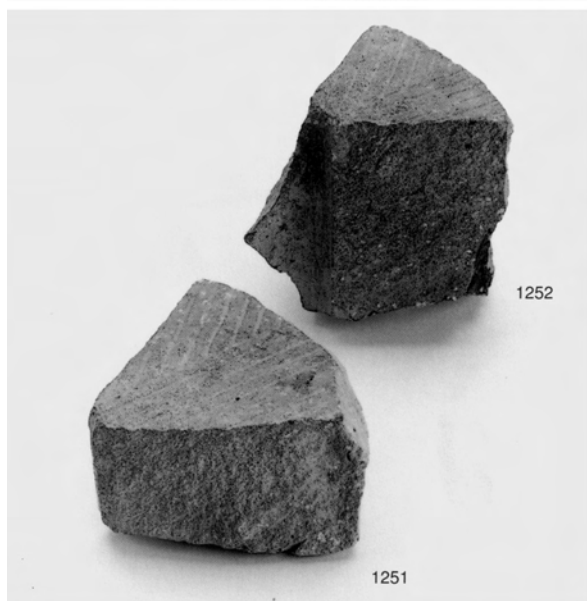
土製品 1 (土錘・土馬・紡錘車・おはじき・土鈴・硯)



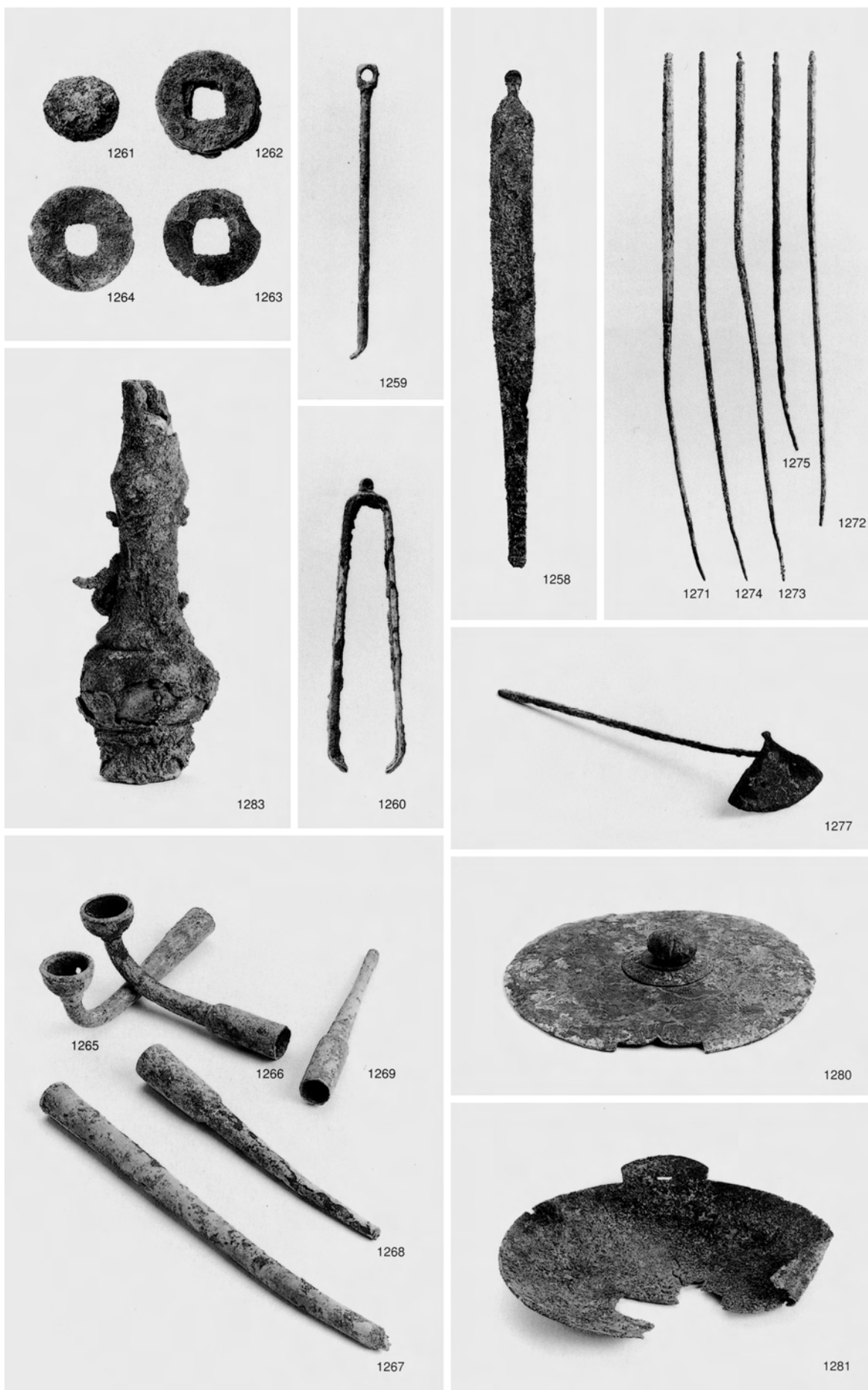
土製品 2(埴埴・輔・鑄型)



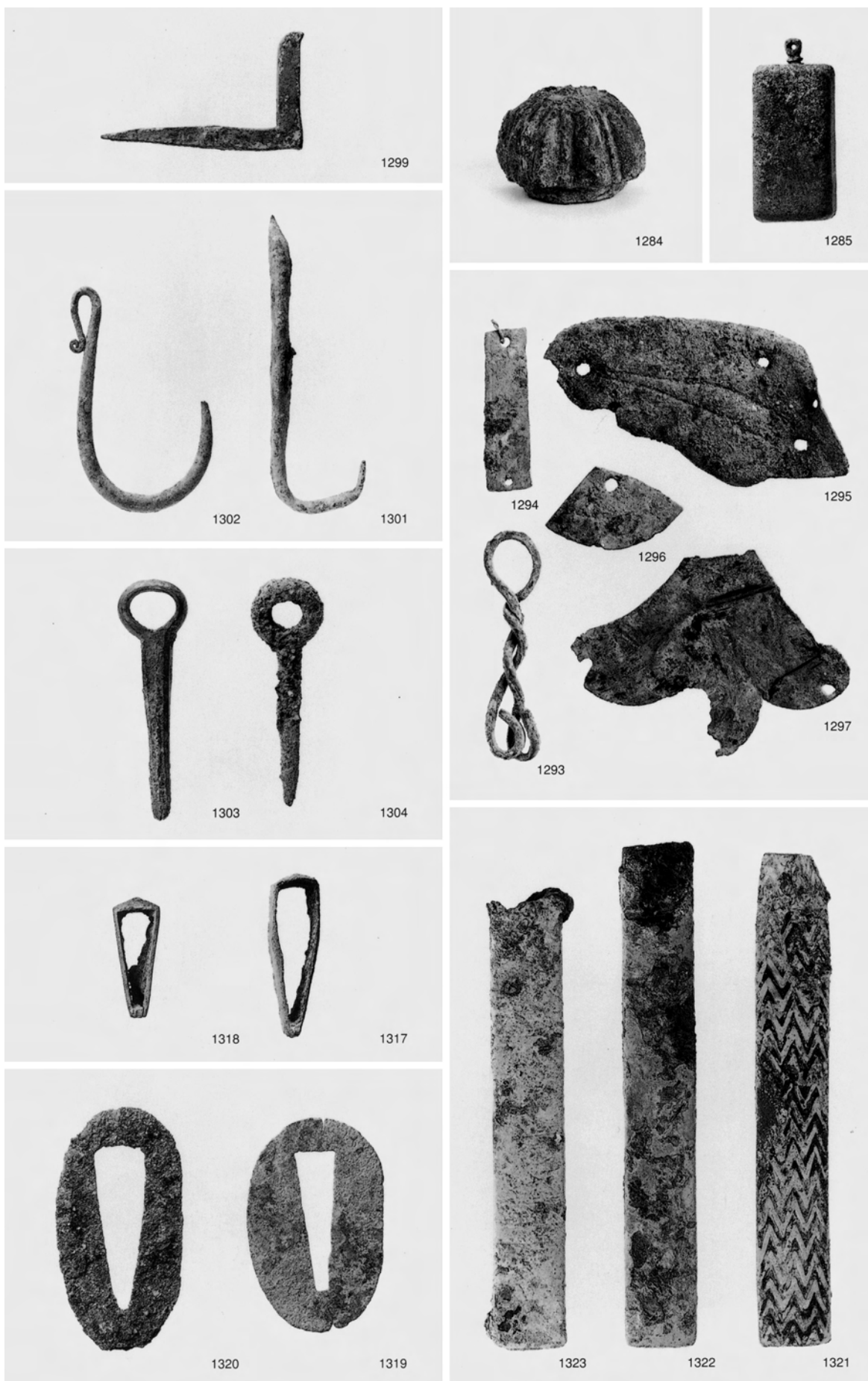
石製品 1 (剥片・磨製石鏃・磨製石斧・紡錘車・勾玉・石製鉸具・印章・硯)



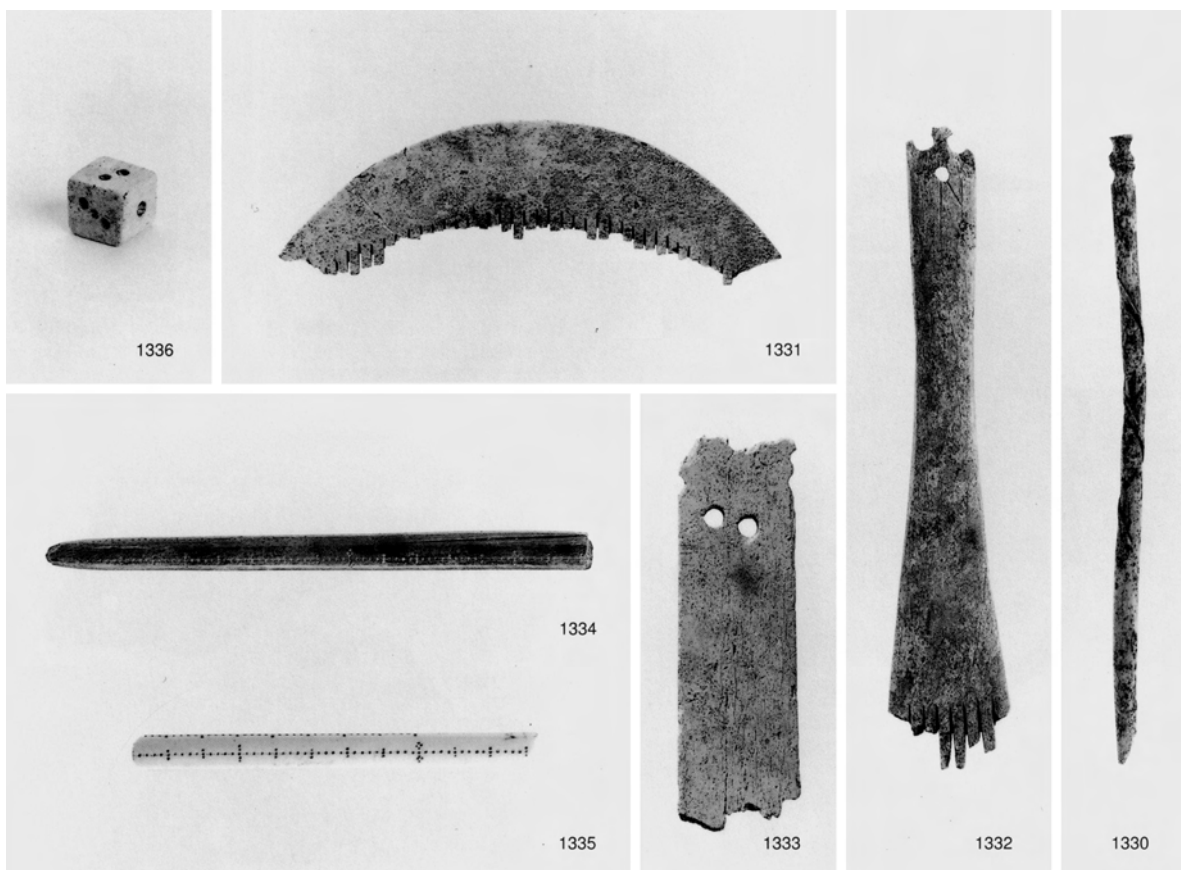
石製品 2(砥石・石鍋・行火・石臼・石塔)



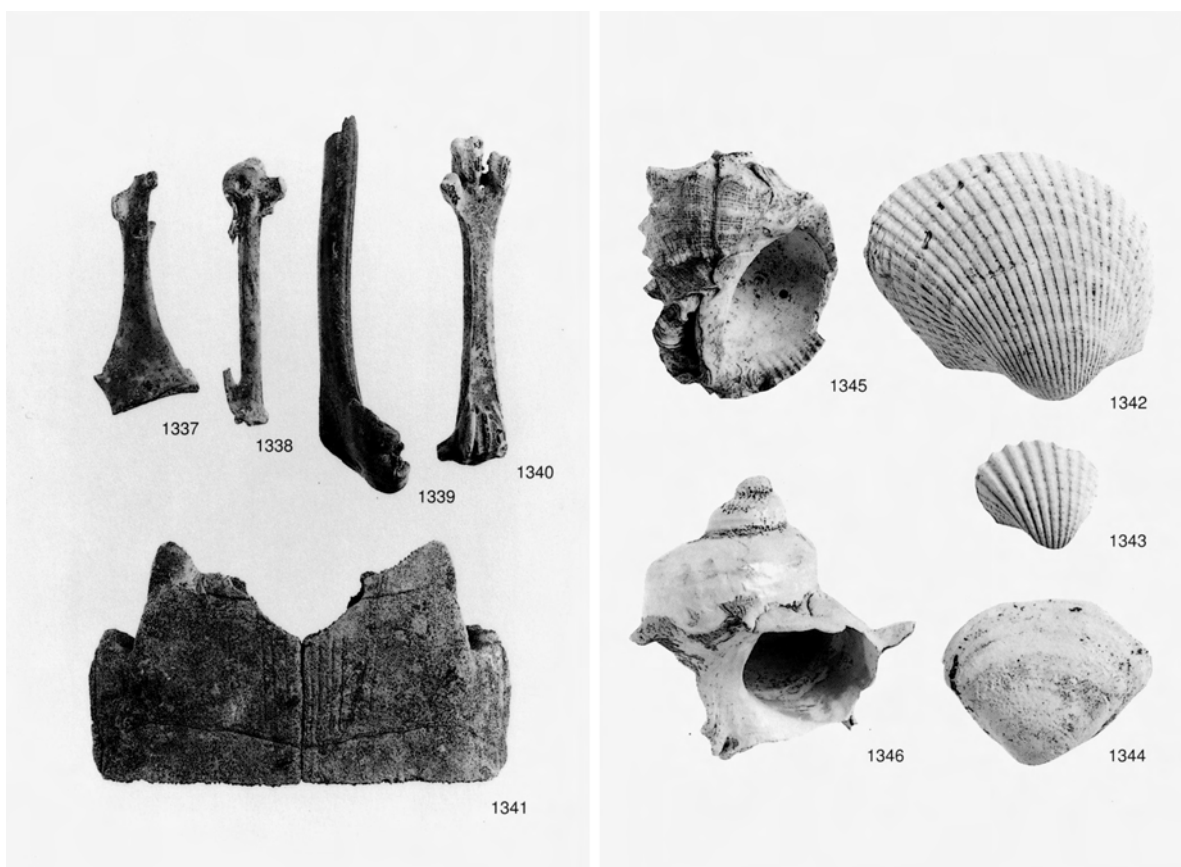
金属製品製品1(銀貨・銅銭・筭・耳搔・毛拔・煙管・香道具・蓋・椀・燭台)



金属製品2(錘・瓔珞・吊金具・環金具・鋤・切羽・小柄)



1 骨角製品（簪・櫛・櫛払・棹秤・さいころ）



2 骨

3 貝殻